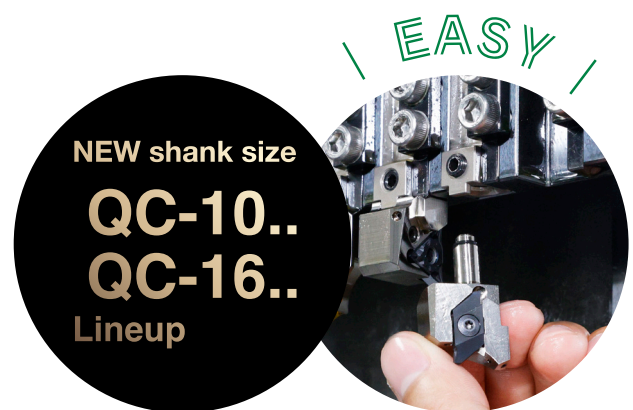
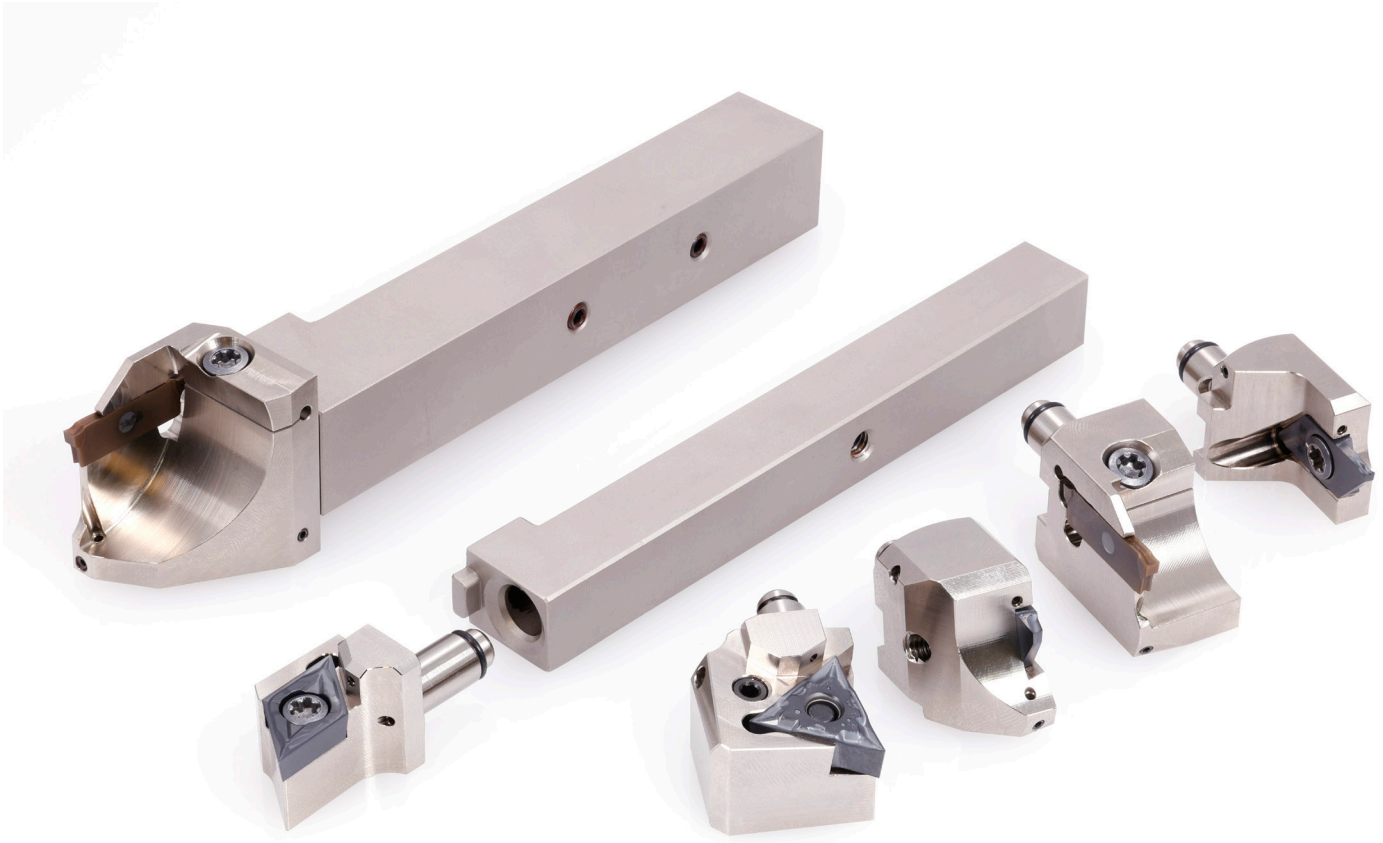


N-Swiss JOINT

Modular Type | Quick-change tool series for automatic lathes



Reduces tool change and set-up times.
Easy-to-use mechanism for consistent repeatability.



Repeatability
Positioning Accuracy

Both X/Z axis
5 μ m or less*

*The head, shank, and insert corner are identical during measurement.

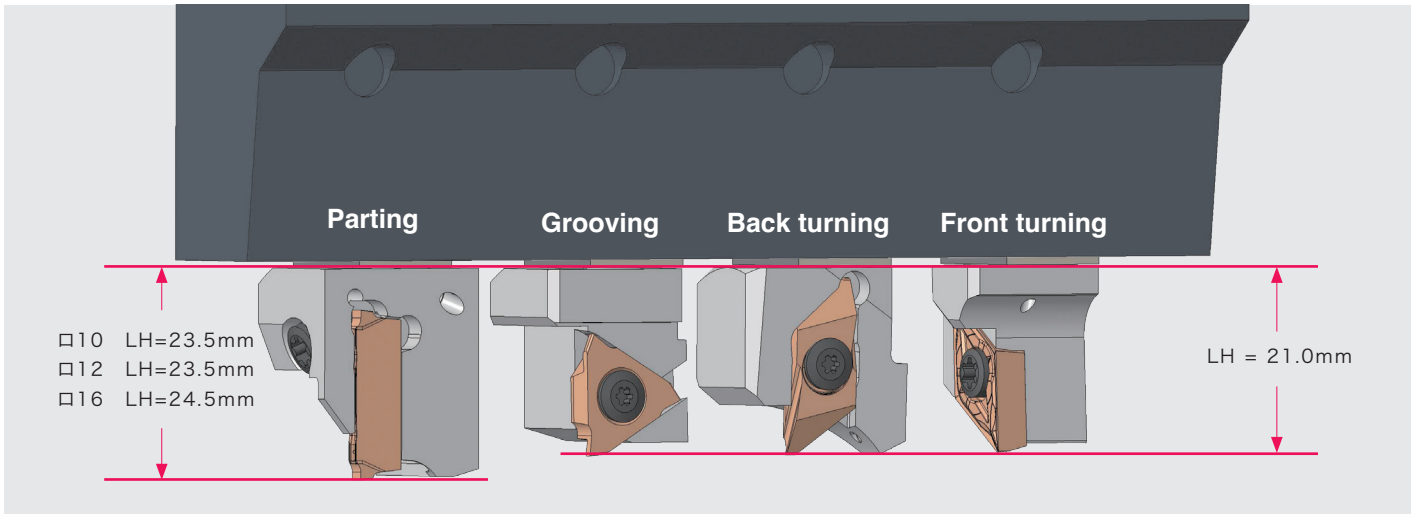
Multiple heads compatible with a single shank, covering a broad range of applications.

N-Swiss JOINT

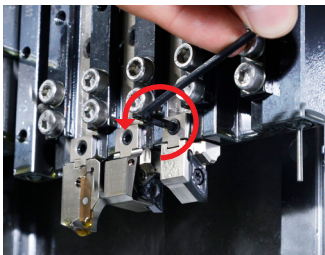
Modular Type | Quick-change tool series for automatic lathes

Standardization of head sizes

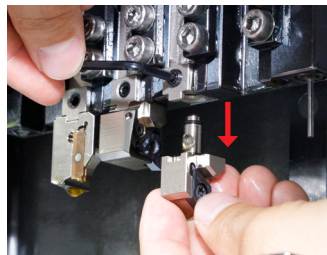
All heads are set to have the same cutting edge position
(The shank size and numerical values for parting tools and other tools differ)



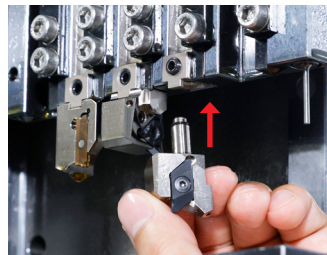
Attachment / Detachment Method



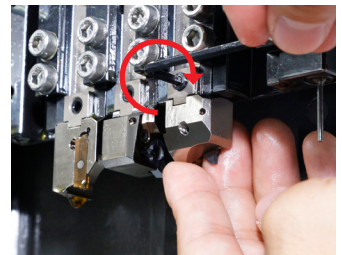
① Loosen the screw.



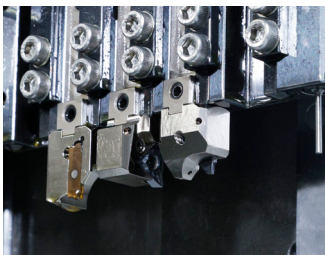
② The head can be removed without fully detaching the screw.



③ Insert the head with the replaced insert.

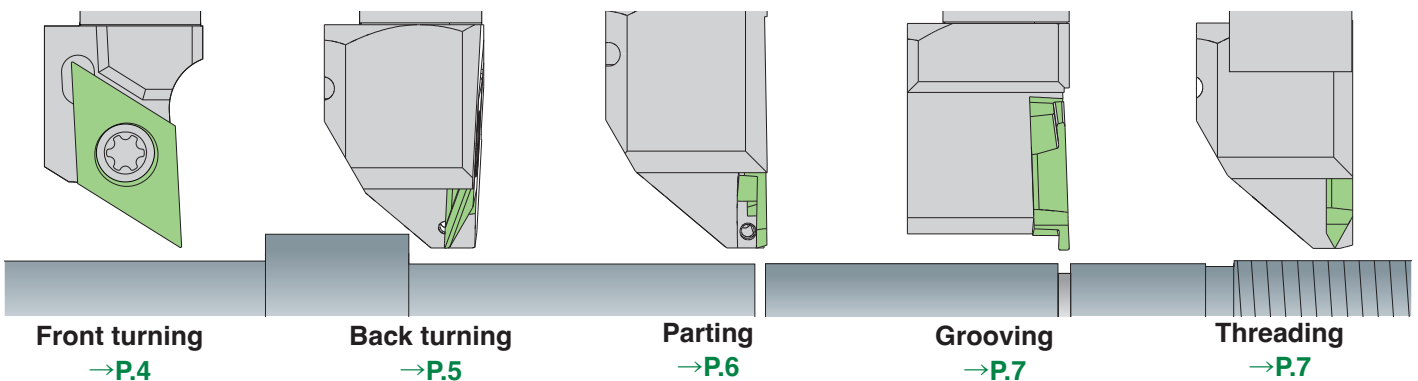


④ Tighten the screw on the side while holding the head.

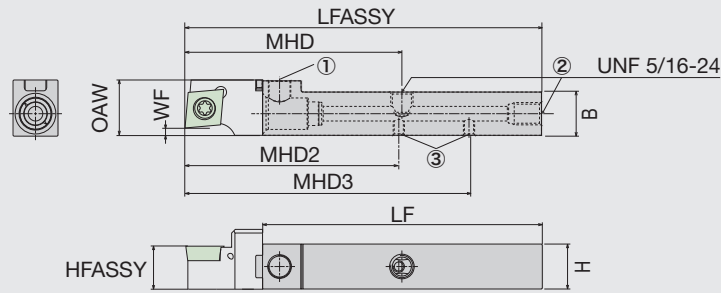


⑤ Tool replacement completed.

Line up



Shanks



Designation	Internal coolant	H	B	LF	OAW	WF ⁽²⁾	MHD ⁽²⁾	MHD2 ⁽²⁾	MHD3 ⁽²⁾	HFASSY ⁽²⁾	LFASSY ⁽²⁾	Torque ⁽³⁾	Coupling size
QC-1012H-OH2 ⁽¹⁾		10	12	83	13	(2)	(70)	(78)	—	(10)	(104)	2.5	QC10-..
QC-1212F-OH		12	12	65	15	(2)	(67)	—	—	(12)	(86)	3	QC12-..
QC-1212X-OH2 ⁽¹⁾		12	12	100	15	(2)	(67)	(77)	—	(12)	(121)	3	QC12-..
QC-1616X-OH2 ⁽¹⁾		16	16	99	20	(2)	(71)	(69)	(94)	(16)	(120)	8.5	QC16-..

⁽¹⁾ OH2 :Compatible with direct coolant supply from the machine' s tool post to the tool.

⁽²⁾ Dimensions with the QC...SCLCR09-F02-OH (LH=21mm) head installed are shown.

⁽³⁾ Recommended clamping torque (N·m)

Spare parts



Designation	Screw ①	Screw ②	Screw ③	Wrench ①	Wrench ②	Wrench ③
QC-1012H-OH2	M5*0.5-TSC	SSM4*4-T	5/16UNF-TSC	TR-2	TR-2.5	TR-4
QC-1212F-OH	M6*0.5-TSC	5/16UNF-TSC	-	TR-3	TR-4	-
QC-1212X-OH2	M6*0.5-TSC	5/16UNF-TSC	SSM4*6-T	TR-3	TR-4	TR-2
QC-1616X-OH2	M8*0.5-TSC	5/16UNF-TSC	SSM4*6-T	TR-5	TR-4	TR-2

Inch Shanks

Designation	Internal coolant	H	B	LF	OAW	WF ⁽²⁾	MHD ⁽²⁾	MHD2 ⁽²⁾	MHD3 ⁽²⁾	HFASSY ⁽²⁾	LFASSY ⁽²⁾	Torque ⁽³⁾	Coupling size
QC-06H-IN-OH2 ⁽¹⁾		9.525	9.525	83	13	(2)	(70)	(78)	—	(10)	(104)	2.5	QC10-..
QC-08F-IN-OH		12.7	12.7	65	15	(2)	(67)	—	—	(12)	(86)	3	QC12-..
QC-08X-IN-OH2 ⁽¹⁾		12.7	12.7	100	15	(2)	(67)	(77)	—	(12)	(121)	3	QC12-..
QC-10X-IN-OH2 ⁽¹⁾		15.875	15.875	99	20	(2)	(71)	(69)	(94)	(16)	(120)	8.5	QC16-..

⁽¹⁾ OH2 :Compatible with direct coolant supply from the machine' s tool post to the tool.

⁽²⁾ Dimensions with the QC...SCLCR09-F02-OH (LH=21mm) head installed are shown.

⁽³⁾ Recommended clamping torque (N·m)

Spare parts



Designation	Screw ①	Screw ②	Screw ③	Wrench ①	Wrench ②	Wrench ③
QC-06H-IN-OH2	M5*0.5-TSC	SSM4*4-T	5/16UNF-TSC	TR-2	TR-2.5	TR-4
QC-08F-IN-OH	M6*0.5-TSC	-	5/16UNF-TSC	-	TR-3	TR-4
QC-08X-IN-OH2	M6*0.5-TSC	SSM4*6-T	5/16UNF-TSC	TR-2	TR-3	TR-4
QC-10X-IN-OH2	M8*0.5-TSC	SSM4*6-T	5/16UNF-TSC	TR-2	TR-4	TR-5

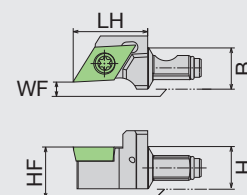
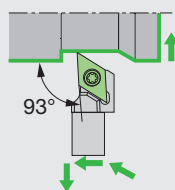
15mm Shift Shank

Please refer to the N-Swiss JOINT modular type (12 x 12) brochure.



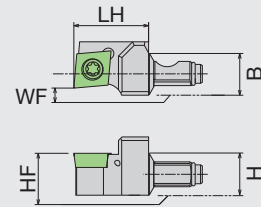
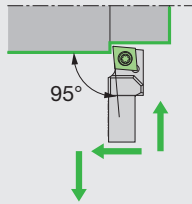
Heads

Front turning



Designation	Internal coolant	H	B	LH	HF	WF	Insert	Applicable shank size
QC10-SDJCR07-F02-OH		10	10	21	10	2	DC..0702..	QC-10..
QC10-SDJCR11-F02-OH		10	10	21	10	2	DC..11T3..	QC-10..
QC16-SDJCR11-F02-OH		16	16	21	16	2	DC..11T3..	QC-16..

Front turning



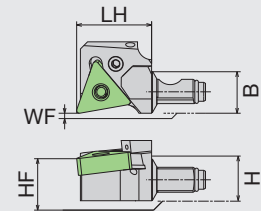
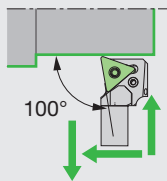
Designation	Internal coolant	H	B	LH	HF	WF	Insert	Applicable shank size
QC10-SCLCR06-F02-OH		10	10	21	10	2	CC..0602..	QC-10..
QC10-SCLCR09-F02-OH		10	10	21	10	2	CC..09T3..	QC-10..
QC16-SCLCR09-F02-OH		16	16	21	16	2	CC..09T3..	QC-16..

Spare parts



Designation	O-Ring	Screw	Wrench
QC10-SDJCR07-F02-OH	OR-350*10	CSTB-2.5*6	TC-8
QC10-SDJCR11-F02-OH	OR-350*10	CSTB-4*8PW	TC-8
QC16-SDJCR11-F02-OH	OR-750*10	CSTB-4*8PW	TC-8
QC10-SCLCR06-F02-OH	OR-350*10	CSTB-2.5*6	TC-8
QC10-SCLCR09-F02-OH	OR-350*10	CSTB-4*8PW	TC-8
QC16-SCLCR09-F02-OH	OR-750*10	CSTB-4*8PW	TC-8

Front turning



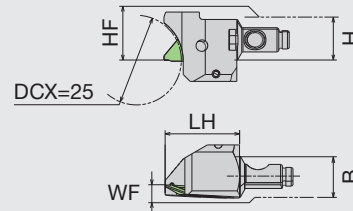
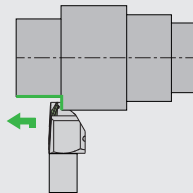
Designation	Internal coolant	H	B	LH	HF	WF	Insert	Applicable shank size
QC16-PTXNR16-OH		16	16	21	16	0	TN..1604..	QC-16..

Spare parts



Designation	O-Ring	Lever	Screw	Wrench
QC16-PTXNR16-OH	OR-750*10	LCL33N	LCS33	LW-2

Back turning



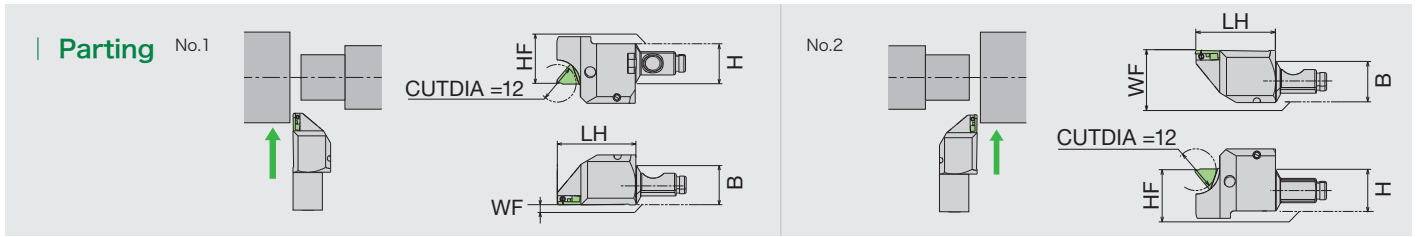
Designation	Internal coolant	H	B	LH	HF	WF	Insert	Applicable shank size
QC10-TBPR-OH		10	10	21	10	3.5	TBP.R..	QC-10..
QC16-TBPR-OH		16	16	21	16	3.5	TBP.R..	QC-16..

Spare parts

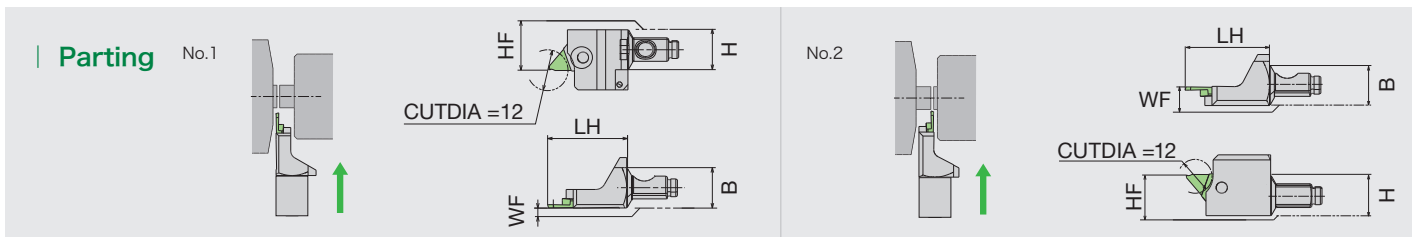


Designation	O-Ring	Screw	Wrench
QC10-TBPR-OH	OR-350*10	LRIS-4*12PW	CLR-15S
QC16-TBPR-OH	OR-750*10	LRIS-4*12PW	CLR-15S

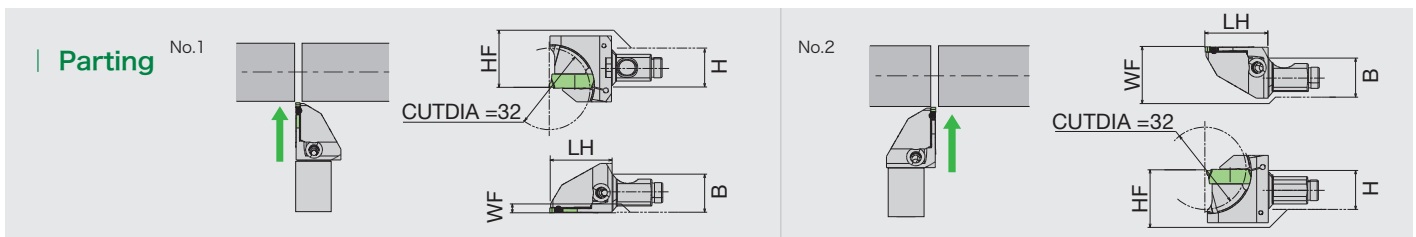
Heads



Designation	Internal coolant	H	B	LH	HF	WF	Insert	Applicable shank size	Figure
QC10-CTPR-OH		10	10	23.5	10	0	CTP..R..	QC-10..	1
QC10-CTPL-OH		10	10	23.5	10	13	CTP..L..	QC-10..	2



Designation	Internal coolant	H	B	LH	HF	WF	Insert	Applicable shank size	Figure
QC10-CTPR-SUB-OH		10	10	23.5	10	0	CTP..R..	QC-10..	1
QC10-CTPL-SUB-OH		10	10	23.5	10	5.5	CTP..L..	QC-10..	2



Designation	Internal coolant	H	B	LH	HF	WF	Insert	Applicable shank size	Figure
QC16-CTDPR-20D32-OH		16	16	24.5	16	0.2	CTDP20..	QC-16..	1
QC16-CTDPL-20D32-OH		16	16	24.5	16	20.2	CTDP20..	QC-16..	2

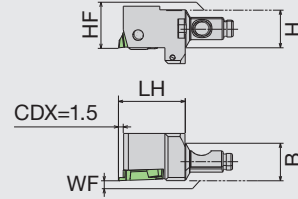
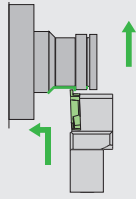
Spare parts



Designation	O-Ring	Screw	Wrench	Wrench
QC10-CTPR-OH	OR-350*10	LRIS-4*10PW	CLR-15S	-
QC10-CTPL-OH	OR-350*10	LRIS-4*10PW	CLR-15S	-
QC10-CTPR-SUB-OH	OR-350*10	LRIS-4*5	-	LLR-25S
QC10-CTPL-SUB-OH	OR-350*10	LRIS-4*5	-	LLR-25S
QC16-CTDPR-20D32-OH	OR-750*10	LRIS-4*12	-	LLR-25S
QC16-CTDPL-20D32-OH	OR-750*10	LRIS-4*12	-	LLR-25S

Heads

Grooving



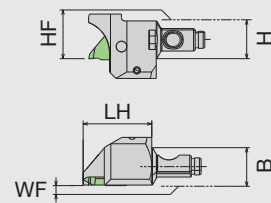
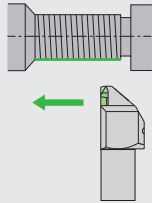
Designation	Internal coolant	H	B	LH	HF	WF	Insert	Applicable shank size
QC10-GTTR00-OH		10	10	21	10	0	GTM..32..R..	QC-10..
QC16-GTTR00-OH		16	16	21	16	0	GTM..32..R..	QC-16..

Spare parts



Designation	O-Ring	Screw	Wrench
QC10-GTTR00-OH	OR-350*10	LR-S-4*10PW	CLR-15S
QC16-GTTR00-OH	OR-750*10	LR-S-4*10PW	CLR-15S

Threading



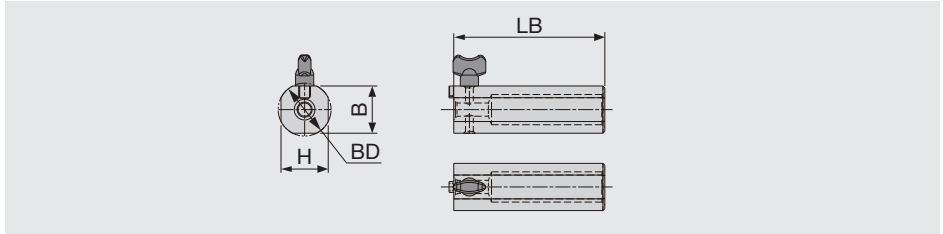
Designation	Internal coolant	H	B	LH	HF	WF	Insert	Applicable shank size
QC10-TTPR-OH		10	10	21	10	0.2	TTP..R..	QC-10..
QC16-TTPR-OH		16	16	21	16	0.2	TTP..R..	QC-16..

Spare parts



Designation	O-Ring	Screw	Wrench
QC10-TTPR-OH	OR-350*10	LRIS-4*12PW	CLR-15S
QC16-TTPR-OH	OR-750*10	LRIS-4*12PW	CLR-15S

Accessories Dedicated accessory for easy replacement of inserts mounted on the modular head



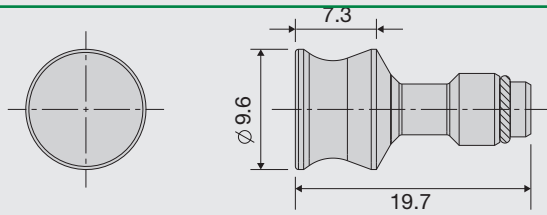
Designation	BD	LB	H	B	Head
QC-10D28	27	80	24	24	QC10-..
QC-12D28	28	80	25	25	QC12-..
QC-16D28	28	80	25	25	QC16-..

Spare parts

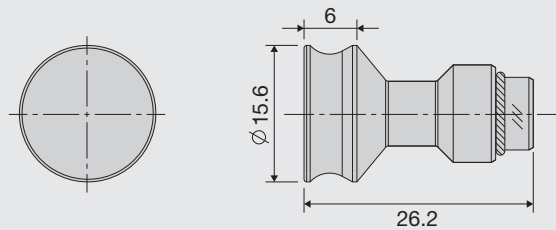


Designation	Screw
QC-10D28	TAB-5*10
QC-12D28	TAB-5*10
QC-16D28	TAB-5*10

Stopper By attaching a stopper to the unused shank, the coupling part is protected, and coolant discharge from the shank is prevented.

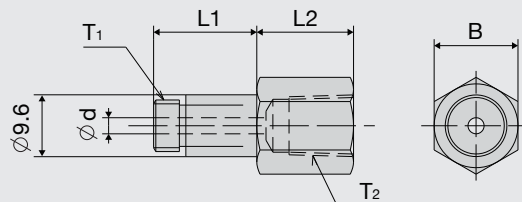


Designation	O-Ring	Applicable shank size
QC10-STOPPER-PLUG	OR-350*10	QC10



Designation	O-Ring	Applicable shank size
QC16-STOPPER-PLUG	OR-750*10	QC16

Thread conversion adapter When using conventional hoses and fittings, please use a threaded adapter.



Designation	T ₁	T ₂	L1	L2	φd	B
SCJ-5/16-RC1/8-L	5/16-24UNF	Rc1/8	16	15	2.5	13

Tungaloy-NTK America, Inc.

3726 N. Ventura Drive
Arlington Heights
IL 60004, U.S.A.
Phone: +1-888-554-8394
Fax: +1-888-554-8392
www.tungaloy.com/us
https://www.ntkcuttingtools.com/us/

Tungaloy Canada

432 Elgin St. Unit 3, Brantford
Ontario N3S 7P7, Canada
Phone: +1-519-758-5779
Fax: +1-519-758-5791
www.tungaloy.com/ca

Tungaloy-NTK de Mexico S.A.

C/ Los Arellano 113
Parque Industrial Siglo XXI
Aguascalientes, AGS
Mexico 20290
Phone: +52-449-929-5410
Fax: +52-449-929-5411
www.tungaloy.com/mx
https://www.ntkcuttingtools.com/mx/

Tungaloy-NTK do Brasil Ltda.

Avd. Independencia N4158
Residencial Flora
13280-000 Vinhedo
São Paulo, Brazil
Phone: +55-19-38262757
Fax: +55-19-38262757
www.tungaloy.com/br
https://www.ntkcuttingtools.com/br/

Tungaloy Hungary Kft

Erzsébet királyné útja 125
H-1142 Budapest, Hungary
Phone: +36 1 781-6846
Fax: +36 1 781-6866
www.tungaloy.com/hu

Tungaloy Turkey

Serifali Mah. bayraktar
Bulvari Kule Sk. No:26
34775 Umraniye / Istanbul / Turkey
Phone: +90 216 540 04 67
Fax: +90 216 540 04 87
www.tungaloy.com/tr

Tungaloy Benelux b.v.

Tjalk 70
NL-2411 NZ Bodegraven Netherlands
Phone: +31 172 630 420
Fax: +31 172 630 429
www.tungaloy.com/nl

Tungaloy Croatia

Ulica bana Josipa Jelačića 87,
10430 Samobor, Croatia
Phone: +385 1 3326 604
Fax: +385 1 3327 683
www.tungaloy.com/hr

NTK Cutting Tools (Shanghai) Co., Ltd

Room 103, Building C, No. 7666 Zhong-
chun Road, Minhang District, Shanghai,
200131, China
Phone: +86-21-64788878
Fax: +86-21-64788879
www.ntkcuttingtools.com/zh-hans/

Tungaloy-NTK Germany GmbH

Katzbergstr. 3a
D-40764 Langenfeld, Germany
Phone: +49-2173-90420-0
Fax: +49-2173-90420-19
www.tungaloy.com/de
https://www.ntkcuttingtools.com/de/

Tungaloy France S.A.S.

Les Fjords
19 avenue de Norvège
91140 Villebon Sur Yvette, France
Phone: +33-1-6486-4300
Fax: +33-1-6907-7817
www.tungaloy.com/fr

Tungaloy Italia S.r.l.

Viale Sarca 336/Edificio 13
20126 Milano, Italy
Phone: +39-02-252012-1
Fax: +39-02-252012-65
www.tungaloy.com/it

Tungaloy Czech s.r.o

Turanka 1583/115g,
627 00 Brno, Czech Republic
Phone: +420-532 123 391
www.tungaloy.com/cz

Tungaloy Ibérica S.L.

C/Miquel Servet, 43B, Nau 7
Pol. Ind. Bufalvent
ES-08243 Manresa (BCN), Spain
Phone: +34 93 113 1360
Fax: +34 93 876 2798
www.tungaloy.com/es

Tungaloy-NTK Cutting Tools (Thailand) Co.,Ltd.

Interlink tower 4th Fl.
1858/5-7 Bangna-Trad Road
km.5 Bangna, Bangna, Bangkok 10260
Thailand
Phone: +66-2-751-5711
Fax: +66-2-751-5715
www.tungaloy.com/th
https://www.ntkcuttingtools.com/th/

Tungaloy Cutting Tools (Taiwan) Co.,Ltd.

9F. No.293, Zhongyang Rd,
Xinzhuang Dist, New Taipei City,
24251 Taiwan
Phone: +886-2-8521-9986
Fax: +886-2-8521-8935
www.tungaloy.com/tw

Tungaloy Singapore (Pte.), Ltd.

62 Ubi Road 1,
#08-09 Oxley BizHub 2
Singapore 408734
Phone: +65-6391-1833
Fax: +65-6299-4557
www.tungaloy.com/sg

Tungaloy-NTK Vietnam LLC

3rd Floor, Licogi 13 Tower,
164 Khuat Duy Tien, Nhan Chinh, Thanh
Xuan District,
Hanoi, Vietnam
Phone: +84 24 63282086
www.tungaloy.com/vn

Tungaloy Scandinavia AB

Bultgatan 38, 442 40
Kungälv, Sweden
Phone: +46-462119200
Fax: +46-462119207
www.tungaloy.com/se

Tungaloy Rus, LLC

Andropova avenue, h.18/7,
11 floor, office 3, 115432,
Moscow, Russia
Phone: +7-499-683-01-80
Fax: +7-499-683-01-81
www.tungaloy.com/ru

Tungaloy Polska Sp. z o.o.

Ul. Irysowa 1, 55-040 Bielany
Wrocławskie, Poland
Phone: +48 607 907 237
www.tungaloy.com/pl

Tungaloy-NTK U.K. Ltd

Suite 3, Pioneer House, Mill Street,
Cannock, WS11 0EF, UK
Phone: +44 121 4000 231
Fax: +44 121 270 9694
www.tungaloy.com/uk
https://www.ntkcuttingtools.com/uk/

Tungaloy India Pvt. Ltd.

One International Center,
Unit # 902-A, 9th Floor,
Tower 1, Senapati Bapat Marg,
Elphinstone Road (West),
Mumbai -400013, India
Phone: +91-22-6124-8804
Fax: +91-22-6124-8899
www.tungaloy.com/in

Tungaloy-NTK Korea Ltd

1040 Gachang-ro, Gachang-myeon,
Dalseong-gun, Daegu, 42936, Korea
Phone: +82-53-760-7698
Fax: +82-53-768-9912
www.tungaloy.com/kr

Tungaloy Malaysia Sdn Bhd

50 K-2, Kelana Mall, Jalan
SS6/14, Kelana Jaya, 47301
Petaling Jaya, Selangor Darul Ehsan
Malaysia
Phone: +603-7805-3222
Fax: +603-7804-8563
www.tungaloy.com/my

Tungaloy Australia Pty Ltd

Unit 68 1470 Ferntree Gully Road
Knoxfield 3180 Victoria, Australia
Phone: +61-3-9755-8147
Fax: +61-3-9755-6070
www.tungaloy.com/au

PT. Tungaloy Indonesia

Kompleks Grand Wisata Block AA-10
No.3-5 Cibitung
Bekasi 17510, Indonesia
Phone: +62-21-8261-5808
Fax: +62-21-8261-5809
www.tungaloy.com/id